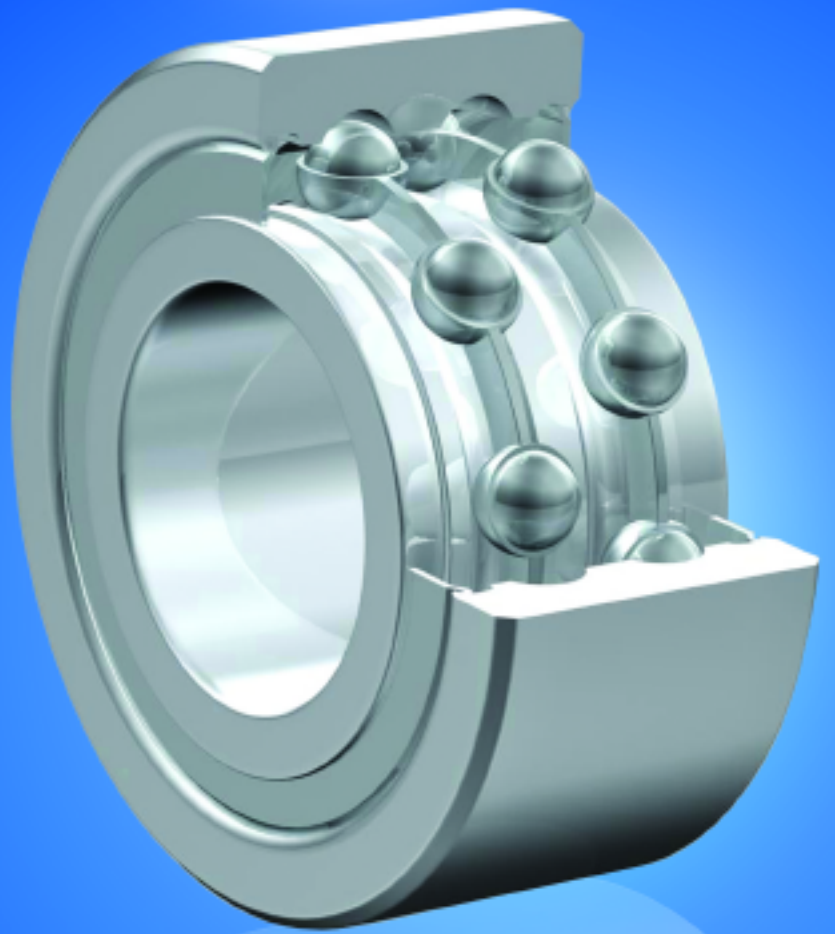
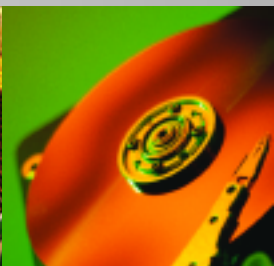
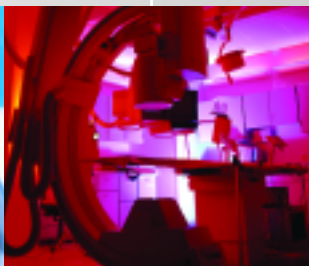


ZON™

Bearings for your future



Schrägkugellager
Double Row Angular Contact Bearings





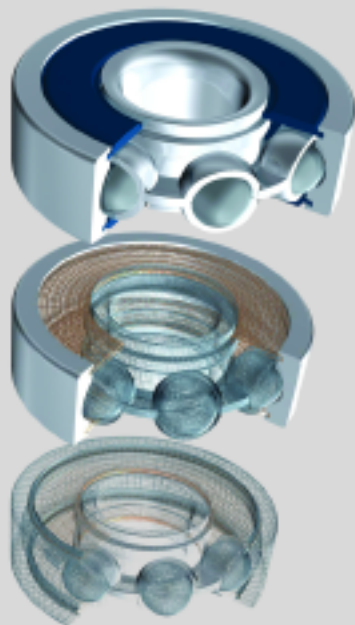
Bearings for your future

Zen Ball Bearings are manufactured to the highest quality for standard and non-standard applications. Our technical department can modify any non-standard bearings to your specific requirements, regardless of quantity.

Apart from our extensive miniature ball bearing range of more than 1000 different types, ranging from 1-10 mm bore (Including inch dimensions), our range also includes Thin section, Three part thrust, Popular metric and any kind of non standard bearing. We are able to design bearings according to your requirements using new materials like ceramic or special steels for applications in Industry, Medicine, Chemistry and Food Processing.

Our technical department can modify any non-standard bearings to your specific requirements, even for small quantities.

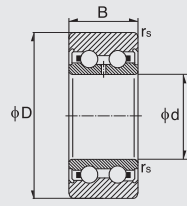
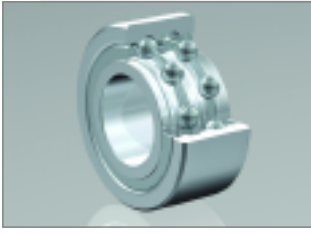
For any items not listed in our catalogue, please contact our experienced sales team.



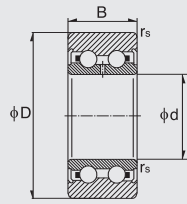
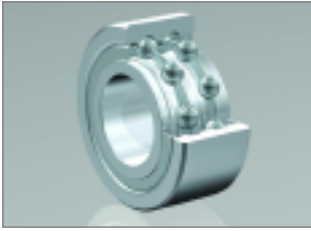
Inhaltsverzeichnis Contents

Produktgruppe
[Product](#)

- 3 [Schrägkugellager](#)
[Double Row Angular Contact Bearings](#)



| Dimension (mm) | | | Designation/Type | | | | * Load Rating (only 100 Cr6) | | * Limiting Speed x1000rpm (open) | | Weight (g) approx. |
|----------------|-------|------|------------------|-----------|--------------|-----------|---------------------------------|------------|--|------|--------------------------|
| d | D | B | Open | | 2RS | | C, dyn. N | C, stat. N | Grease | Oil | |
| | | | Chrome Steel | Stainless | Chrome Steel | Stainless | | | | | |
| 10.0 | 30.0 | 14.0 | 3200 | S3200 | 3200-2RS | S3200-2RS | 7600 | 5850 | 16.0 | 20.0 | 50 g |
| 12.0 | 32.0 | 15.9 | 3201 | S3201 | 3201-2RS | S3201-2RS | 8750 | 6500 | 15.0 | 19.0 | 60 g |
| 15.0 | 35.0 | 15.9 | 3202 | S3202 | 3202-2RS | S3202-2RS | 11100 | 9100 | 13.0 | 17.0 | 70 g |
| 17.0 | 40.0 | 17.5 | 3203 | S3203 | 3203-2RS | S3203-2RS | 14400 | 8650 | 10.0 | 15.0 | 103 g |
| 20.0 | 47.0 | 20.6 | 3204 | S3204 | 3204-2RS | S3204-2RS | 19300 | 12000 | 9.0 | 13.0 | 168 g |
| 25.0 | 52.0 | 20.6 | 3205 | S3205 | 3205-2RS | S3205-2RS | 20900 | 14100 | 8.0 | 11.0 | 194 g |
| 30.0 | 62.0 | 23.8 | 3206 | S3206 | 3206-2RS | S3206-2RS | 29100 | 20100 | 7.1 | 9.0 | 316 g |
| 35.0 | 72.0 | 27.0 | 3207 | S3207 | 3207-2RS | S3207-2RS | 38400 | 27400 | 5.6 | 7.1 | 484 g |
| 40.0 | 80.0 | 30.2 | 3208 | S3208 | 3208-2RS | S3208-2RS | 47400 | 34600 | 5.0 | 6.3 | 654 g |
| 45.0 | 85.0 | 30.2 | 3209 | S3209 | 3209-2RS | S3209-2RS | 47500 | 35400 | 4.5 | 5.4 | 709 g |
| 50.0 | 90.0 | 30.2 | 3210 | S3210 | 3210-2RS | S3210-2RS | 50700 | 40200 | 4.0 | 4.6 | 764 g |
| 17.0 | 47.0 | 22.2 | 3303 | S3303 | 3303-2RS | S3303-2RS | 20900 | 11900 | 9.5 | 14.0 | 190 g |
| 20.0 | 52.0 | 22.2 | 3304 | S3304 | 3304-2RS | S3304-2RS | 23100 | 14500 | 8.5 | 12.0 | 230 g |
| 25.0 | 62.0 | 25.4 | 3305 | S3305 | 3305-2RS | S3305-2RS | 29500 | 19100 | 7.5 | 10.0 | 369 g |
| 30.0 | 72.0 | 30.2 | 3306 | S3306 | 3306-2RS | S3306-2RS | 41000 | 27400 | 6.2 | 7.9 | 585 g |
| 35.0 | 80.0 | 34.9 | 3307 | S3307 | 3307-2RS | S3307-2RS | 51200 | 33200 | 5.1 | 6.5 | 816 g |
| 40.0 | 90.0 | 36.5 | 3308 | S3308 | 3308-2RS | S3308-2RS | 61900 | 43400 | 4.7 | 5.8 | 1070 g |
| 45.0 | 100.0 | 38.7 | 3309 | S3309 | 3309-2RS | S3309-2RS | 89000 | 79300 | 4.5 | 6.0 | 1420 g |
| 50.0 | 110.0 | 44.4 | 3310 | S3310 | 3310-2RS | S3310-2RS | 107000 | 96300 | 4.0 | 5.3 | 1930 g |
| 17.0 | 40.0 | 17.5 | 5203 | S5203 | 5203-2RS | S5203-2RS | 14600 | 9050 | 11.0 | 16.0 | 96 g |
| 20.0 | 47.0 | 20.0 | 5204 | S5204 | 5204-2RS | S5204-2RS | 19600 | 12400 | 10.0 | 15.0 | 160 g |
| 25.0 | 52.0 | 20.6 | 5205 | S5205 | 5205-2RS | S5205-2RS | 21300 | 14700 | 8.5 | 11.0 | 180 g |
| 30.0 | 62.0 | 23.8 | 5206 | S5206 | 5206-2RS | S5206-2RS | 25600 | 21100 | 7.1 | 9.5 | 290 g |



| Dimension (mm) | | | Designation/Type | | | | * Load Rating (only 100 Cr6) | | * Limiting Speed x1000rpm (open) | | Weight (g) approx. |
|----------------|-------|------|------------------|-----------|--------------|-----------|---------------------------------|------------|--|------|--------------------------|
| d | D | B | Open | | 2RS | | C, dyn. N | C, stat. N | Grease | Oil | |
| | | | Chrome Steel | Stainless | Chrome Steel | Stainless | | | | | |
| 35.0 | 72.0 | 27.0 | 5207 | S5207 | 5207-2RS | S5207-2RS | 39000 | 28700 | 6.3 | 8.0 | 440 g |
| 40.0 | 80.0 | 30.2 | 5208 | S5208 | 5208-2RS | S5208-2RS | 44000 | 33500 | 5.6 | 7.5 | 580 g |
| 45.0 | 85.0 | 30.2 | 5209 | S5209 | 5209-2RS | S5209-2RS | 49500 | 38000 | 5.0 | 6.7 | 630 g |
| 50.0 | 90.0 | 30.2 | 5210 | S5210 | 5210-2RS | S5210-2RS | 53000 | 43500 | 4.8 | 6.3 | 660 g |
| 17.0 | 47.0 | 22.2 | 5303 | S5303 | 5303-2RS | S5303-2RS | 21000 | 12600 | 10.0 | 14.0 | 180 g |
| 20.0 | 52.0 | 22.2 | 5304 | S5304 | 5304-2RS | S5304-2RS | 24600 | 16000 | 9.0 | 12.0 | 220 g |
| 25.0 | 62.0 | 25.4 | 5305 | S5305 | 5305-2RS | S5305-2RS | 32500 | 20700 | 7.5 | 10.0 | 350 g |
| 30.0 | 72.0 | 30.2 | 5306 | S5306 | 5306-2RS | S5306-2RS | 40500 | 28100 | 6.3 | 8.5 | 530 g |
| 35.0 | 80.0 | 34.9 | 5307 | S5307 | 5307-2RS | S5307-2RS | 51000 | 36000 | 5.6 | 7.5 | 730 g |
| 40.0 | 90.0 | 36.5 | 5308 | S5308 | 5308-2RS | S5308-2RS | 56500 | 41000 | 5.3 | 6.7 | 950 g |
| 45.0 | 100.0 | 38.7 | 5309 | S5309 | 5309-2RS | S5309-2RS | 68500 | 51000 | 4.5 | 6.0 | 1400 g |
| 50.0 | 110.0 | 44.4 | 5310 | S5310 | 5310-2RS | S5310-2RS | 81800 | 62200 | 3.6 | 5.3 | 1950 g |

Alle Rechte vorbehalten, kein Teil des Kataloges darf in irgendeiner Form (Druck, Fotokopie, Mikrofilm oder in einem anderen Verfahren) ohne Genehmigung reproduziert oder unter Verwendung elektronischer Systeme verarbeitet, vervielfältigt oder verbreitet werden.

Copyright reserved.
No part of the catalogue is to be copied, extracted or modified without explicit permission from the copyright holder.



Bearings for your future